



板状酸化鉄 FESOIE ファイソフ

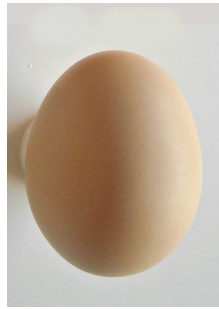
■特徴 Features

- 黄色系の板状酸化鉄で、高着色力で感触が良好です。
It is similar yellowed platy Iron oxide that has high tinting strength and comfortable to the touch.
- FS-100は高彩度で、FS-300は光沢感があります。
FS-100 has high chroma and FS-300 has shiny gloss.

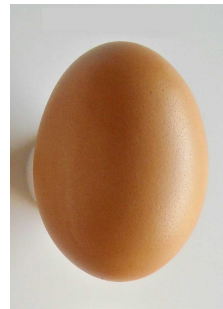
■製品リスト List of products

銘柄 Grade	色調 Tone	形状 Shape	組成 Chemical formula	粒子径 Particle size (μm)	pH
FS-100	 高彩度 High chroma	板状 Platy	FeOOH	0.1~0.5	7.0±1.0
FS-300	 光沢感 Shiny gloss			1~10	6.0±1.0

測定の一例であり、規格値ではありません。
This data is not intended to serve as a certificate of quality guarantee.



Before applying FESOIE

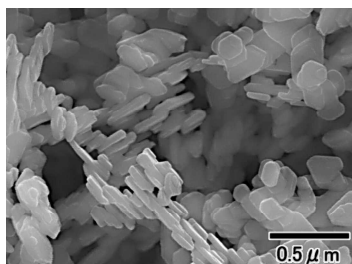


After the application (FS-300)

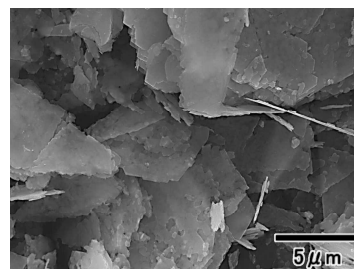
■重金属含有量 Purity

銘柄 Grade	重金属含有量 Purity (ppm)													
	Pb	As	Hg	Cd	Zn	Ba	Cr	Cu	Ni	Sb	Co	Mo	Sn	Se
FSシリーズ	≤2	≤2	≤1	≤1	≤35	≤5	≤20	≤10	≤10	≤1	≤10	≤5	≤1	≤1
欧州 E172	≤10	≤3	≤1	≤1	≤100	-	≤100	≤50	≤200	-	-	-	-	-
米国 FDA			≤3	-	-	-	-	-	-	-	-	-	-	-

■電子顕微鏡写真 SEM



FS-100



FS-300