



■特徴 Features

- ABL-412HPは外原規、米国FDA、欧州のE172規格に適合しており、ABL-213は工業用グレードとなります。
ABL-412HP meets JSQ12006, FDA and E172. ABL-213 is industrial grade.
- 着色力を極限まで高めた黒色です。
It has ultra high tinting strength black color.
- BL-100HPの約40%の添加量で同等の黒さとなります(着色力がBL-100HPの約2.5倍)。
Tinting strength is about 2.5 times as strong as that of BL-100HP.

銘柄 Grade	原色 Mass Color	淡色*1 Tint color	組成 Composition	形状 Shape	粒子径 particle size (μm)	pH	着色力*2 Tinting strength
ABL-412HP (ABL-213)	高着色力 High tinting strength		Fe ₃ O ₄ :98% Al(OH) ₃ : 2%	八面体状 Octahedral	0.1	8.0±1.0	-10
BL-100HP	標準 Standard		Fe ₃ O ₄ :100%	球状 Spherical	0.3	7.0±1.0	0

*1 淡色…酸化チタン/黒酸化鉄=3/1(重量比)
Tint color…Titanium dioxide/Black iron oxide= 3/1(weight ratio)

*2 着色力(TINT- Δ L):マイナス方向に大きくなるほど、着色力が大きい(標準はBL-100HP)
Tinting strength(TINT- Δ L):The smaller TINT- Δ L number is, the stronger tinting strength is.

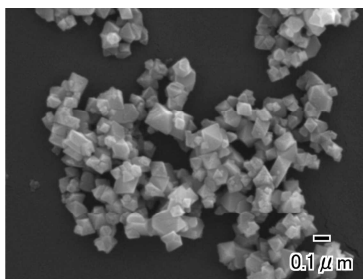
測定の一例であり、規格値ではありません。

This data is not intended to serve as a certificate of quality guarantee.

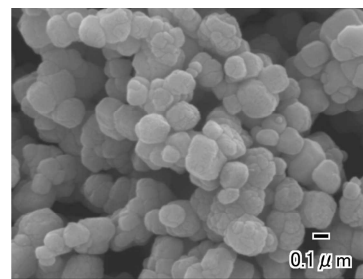
■重金属含有量 Purity

銘柄 Grade	重金属含有量 Purity(ppm)													
	Pb	As	Hg	Cd	Zn	Ba	Cr	Cu	Ni	Sb	Co	Mo	Sn	Se
ABL-412HP	≤2	≤2	≤1	≤1	≤35	≤5	≤20	≤20	≤20	≤1	≤20	≤5	≤1	≤1
BL-100HP								≤10	≤10					
欧州 E172	≤10	≤3	≤1	≤1	≤100	-	≤100	≤50	≤200	-	-	-	-	-
米国 FDA			≤3	-	-	-	-	-	-	-	-	-	-	-

■電子顕微鏡写真 SEM



ABL-412HP, ABL-213



BL-100HP

■淡色 Tint color

ABL-412HP, ABL-213
Tint color

BL-100HP
Tint color